

WHAT IS EQUINE GASTRIC ULCER SYNDROME (EGUS)?

Gastric ulcers (also referred to as stomach ulcers) are lesions to the stomach lining which can be mild to severe.

Gastric Ulcers are a common condition in all horses, not only competition horses. Many horses suffering EGUS show minimal signs meaning the condition can often go un-diagnosed & therefore untreated. Being aware & alert for subtle signs of EGUS can help you to catch things early & prevent future problems for your horse.

CAUSES

Replicating a horse's natural lifestyle is challenging, especially with limited pasture time and increased stabling in winter. Key risk factors for EGUS therefore can be:

- Extended periods without forage (during stabling, exercise, or transport). This reduces digestive blood flow and cause acid exposure to the stomach lining.
- Feeding high concentrated feed with low forage increases volatile fatty acids and lactic acid, lowering stomach pH.
- Stress from exercise, travel, limited social contact, or turnout.
- Long-term use of high-dose anti-inflammatories reduces prostaglandin production, decreasing stomach protection and raising ulcer risk.

SIGNS AND SYMPTOMS

Poor Performance
Resents girth tightening

Weight Loss
Colic

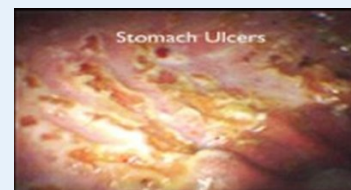
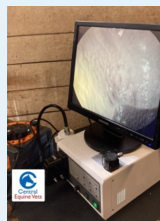


Poor Coat
Diarrhea

Poor appetite

INVESTIGATION & DIAGNOSIS

Our portable video endoscopes let us and our clients view hard-to-reach areas inside horses. Using a 3-metre video gastroscope, vets can quickly investigate gastric ulceration syndrome by seeing the horse's stomach on a portable screen in real time. Unlike traditional fibre endoscopes, the video model displays clear images on a monitor, allowing vets to immediately show and discuss findings with clients. This visual approach helps make diagnoses easier to understand.



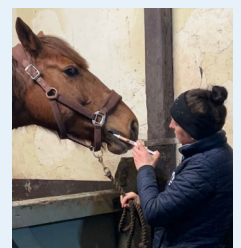
TREATMENT & MANAGEMENT

MEDICATION



Acid suppression is the aim in all cases. This is standardly achieved with Omeprazole. Omeprazole comes in an injectable or paste form meaning that there are different options depending on each individual horse's needs.

Vets may also use additional treatments alongside the Omeprazole e.g. Sucralfate, depending on the clinical need.



DIETARY MANAGEMENT



- => More roughage / fibre – not sugar / starch (concentrates).
- => Can replace energy from concentrates with oil 1ml/kg/day or un-molassed beet pulp.
- => Alfalfa - good source of calcium & causes chewing which produces the acid-buffering "bicarbonate".